

The Bulletin

RUAPEHU SKI CLUB

Volume 87, No. 3

September 2022



CONTENTS

- 2 **President's column**
- 3 **Ruapehu news**
- 5 **Pandemic issues**
- 5 **RAL medical**
- 6 **Swiss instructor**
- 7 **Iwikau parking**
- 7 **Volcano update**
- 8 **No Turoa sale**
- 10 **AGM topics**
- 15 **Lodge moves**
- 16 **Haensli Cup**
- 17 **RSC calendar**
- 17 **New members**
- 18 **Fiona is elected**
- 20 **Snow Sports NZ**
- 24 **Christie Derby**
- 27 **Ski or board**
- 27 **Yodel festival**
- 28 **RSC Wanaka?**
- 30 **World snow news**
- 32 **RSC info page**



Skiing into Te Heuheu Valley at Whakapapa. Photo: RAL.

PRESIDENT'S COLUMN

Hello Everyone,

It has been a very different start to the ski season this year. I have been a member since 2007 and don't ever remember the snow coming so late.

At the time of writing I'm not quite sure Ruapehu has had a decent amount of snow that has stayed on the lower slopes and not been washed away by rain.

RAL have done an amazing job of snow making and trail building to get access trails and lifts operational.

The late snow falls has presented the Club with some unexpected challenges, as the Rangitira had not been operational until August 13th and there being no downhill access to the clubs through the Waterfall area.

At Turoa only the High Noon and Alpine Meadow have been operating until August 13th when the Giant chairlift started operation. This has meant less than ideal numbers have been to our buildings in the last months.

The Committee was hoping for a better result, with House committee doing a great job to provision upper mountain buildings at Whakapapa, and all four buildings having cooks ready for members.

Our AGM this year was once again held at the Royal New Zealand Yacht Squadron. As always it was a good time to catch up with many people and hear from members.

Thanks to Matt Lamb we were also able to live stream the AGM for the first time, for those who were unable to attend in person.

An amended constitution was adopted, with the major changes being a new membership category of young adults from 18-22 years-old, and a smaller size

in nominated Committee members, that will utilise non-committee members in sub-committees.

Our new Committee was elected. I would like to thank those not returning to the Committee, for their service: Heather Chao, Richard Horton, John Payne and Richard Nelson.

I would like to welcome the new members to the Committee, Drew Blair, Nicola Couch, Denise Ditchburn and Kevin Schluter.

Phill Thomass and Richard Nelson were given Life memberships in recognition of all their many years of service to the Club.

I'd also like to Thank Phill for his leadership of the Club over the last two years with the unexpected challenges he faced leading us through the Covid-19 regulations and the lockdowns.

It is an honour and a challenge to be stepping into the role of President after doing the Club Captain's role since 2018.

My family has been with the Club for 15 years and enjoyed many school holidays and squad groups organised by other Club members.

It has influenced my son's choice of career, as he is now a snow patroller, presently working at The Remarkables skifield.

My husband, Damon Forsyth, is also on the Committee. His role is the Lodge Maintenance officer.

The Christiania Derby was pushed a week further into August this year, as they hadn't been able to run a race for the last four years due to lack of snow. We entered a masters and a junior team. Our masters came third, which was later upgraded to second. Well done Team "Master Blasters".

Looking forward to catching up with many of you out on the ski slopes.

Catherine Gafa
RSC President

THROUGH THE LODGE WINDOW

Happy Valley opened for sledding and beginner skiing on June 4th.

The upper mountain (Te Heuheu Valley) opened on July 23rd.

At Turoa the Alpine Meadow opened for learners on July 10th.

The upper mountain (High Noon Express) opened on July 24th.

RSC's Club Week was moved from the Lodge to the Chalet due to poor early snowfall.

It was mid-August before the Rockgarden was opened for skiing and the Staircase was largely bare at that time.

By contrast skifields in the South Island and Australia enjoyed good snow.

August 13th was a stunning day on our maunga. Lifts opened from 8am including day one of the Far West T-bar, the Rangatira chair and the Cindertrack Carpet.

A DJ was spinning some good vibe tunes on the Back Bar Deck at the Knoll, the Christiania Derby was raced and there was free twilight riding in Happy Valley and on the Rangatira.

RSC teenager Aidan Nicholson passed away in a motorcycle incident at Rotorua in June.

A group of RSC folk attended his funeral at Rotorua Boys High School.

His family said Aidan was a proud Club member for the past 11 years and was looking forward to time on the

mountain these school holidays.

We offer the Club's condolences to his family.

Prisoners, hapū and volunteer conservationists are helping to restore the native bush that would have once grown on the Wai-o-Taka river banks near Tongariro Prison.

To restore the river, willow trees and other weeds were treated and removed.

Since 2018, prisoners have planted 60,000 trees on their side of the bank, and maintained the young trees.

The hapū and Project Tongariro, a volunteer conservation group, are restoring the other side of the awa, planting 45,000 trees.

RSC teenager Mischa Thomas won the open division of the first freestyle slopestyle skiing event held at Cardrona.

After good solid first run except for the first rail Mischa nailed her second run to take the top spot in her first open division event.

Johan Bergman is the new ski area manager at Turoa. He has been a regular visitor in recent years with his wife and two daughters, staying at his sister's house.

Johan has worked in the local government and consulting industries. Earlier was a ski instructor at Cardrona and at Crystal Mountain (US).

He spent a year at the Outdoor Pursuits Centre on a certificate in outdoors leadership and has been a Land Search and Rescue volunteer.

**THE
RUAPEHU SKI CLUB**

(inc) Founded 1913

P.O.Box 8064, Symonds St.,
Auckland, New Zealand 1150

Telephone: 0-9-377 3856

Email: admin@rsc.org.nz

Website: www.rsc.org.nz



President: Catherine Gafa

Vice-Presidents: Carl Burling,
Liza Fitzsimmons, Damon Forsyth,
Marion Quinn, Donald Webster

Secretary: Louise Blair

Treasurer: Sonia Quinn

Immediate Past President:

Phill Thomass

Captain: Simon Hunt

Vice-Captain: Paula Cooper

Committee: Adrian Adriaansen,

Drew Blair, Ron Bonfrer,
Nichola Crouch, Denise Ditchburn,

Sam Hood, Fiona Lovelock,

Kevin Schluter

Patron: Peter Brady

Patroness: Barbara Scelly

Auditors: Hart and Co

Admin Officer: Ceana Priest

Heritage Fund Guardians:

Robin Dallas, Bernard Smith,
Catherine Gafa, Phill Thomass

Fund Treasurer: Mike Wardle

Glacier Hut Custodian:

Bernard Smith

People were briefly evacuated from parts of Whakapapa Village at midnight in June when strong winds coincided with an earthquake centred at Porirua.

DOC said the alert system worked exactly as it should and it is always better to be safe than sorry.

“This resulted in lahar warnings being broadcast at Whakapapa Ski Area and Whakapapa Village. To the system, these conditions perfectly mimic an eruption and it performed as designed.”

Workers have donated and installed a piece of authentic rail track at the Ohakune Carrot Park. The track is to acknowledge the **Rochfort Railway Station** which stood on this spot.

It ties in with a bush track that goes through to the site of a footbridge across the river that was washed out in 1936. This footbridge was the main access from Ohakune to the railway station.

Poto Williams has been named as the new Conservation Minister.

*She replaces **Kiri Allan** who becomes Justice Minister and an associate Finance Minister.*

The deadline for the December Bulletin will be **Friday November 18th.**

All items should be with the Editor by then.

THE BULLETIN

Founded in 1936 by Jock and Fizzie Graham.

Editor: Alan Graham, 63 Messines Rd, Karori,
Wellington 6012.

Telephone: 04-476 4598.

Email: alanjograham@xtra.co.nz

Advertising: admin@rsc.org.nz or 09 377 3856



RSC Lodge cook Te Majik Nepia enjoys her first ride on a chairlift. Photo: Tim Sharp.

PANDEMIC ISSUES

Three Auckland men admitted breaching Covid borders to go skiing at Turoa last year.

Aged between 18 and 23, they used genuine essential worker passes to leave Auckland and travel to Mt Ruapehu.

They were arrested at Ōhakune after RAL staff raised suspicions about the paperwork they used to get a ski pass.

NZ has had 1.7 million cases of Covid-19 with 1800 deaths.

Worldwide there have been 600 million cases and 6.5 million deaths.

NZ in July changed the way deaths from Covid-19 are reported. This reduced the death toll by 600.

Previously a death was reported if a person died while infected with Covid, or recently infected.

The new measure records only deaths from Covid-19 that can be wholly or partially attributed to the virus.

It omits people who suffered heart attacks or other diseases. The new

standard follows reporting specified by the World Health Organisation.

RUAPEHU MEDICAL

RAL introduces its medical centres at Whakapapa and Turoa.

“We are not only here to look after the staff and guests on Mt Ruapehu, but also available to the wider community.

“From the injuries we see on the skifields, only around 6 percent of our patients need to be transferred to hospital.

“We pride our clinics on being able to save patients a trip to hospital and this is because we offer very similar services to some of the local hospitals.

“We see patients for ACC consults, injury management, medical issues, prescriptions, and also offer a range of medical products such as inhalers, pain relief, cold and flu tablets, and strapping tape”

The clinics are open from 8.30 to 16.30 every day the skifields are open.

A doctor, registered nurse and radiographer are on site.

SWISS INSTRUCTOR MEET LINDA RUBI

We are welcoming Swiss ski instructor Linda Rubi to the Club this winter to continue the legacy of the Haensli family.

Hi, my name is Linda Rubi and I'm 26 years-old. I grew up in Brienz-Axalp, a small mountain village in Bernese Oberland in Central Switzerland.

My father taught me how to ski. From school, I attended the local ski club, so I learned to ski at a very young age.

After regular school, I made an apprenticeship in an office. At that time I started to train the youngsters of the local ski club.

When I was 20 years-old I spent my first season teaching in Davos. At first, I wanted to work there as a ski instructor for just one year, but I could not stop with this passion because I loved it very much.

When the lockdown was called in Switzerland, the season ended abruptly.

Because it was very uncertain whether we would be skiing again next winter, I decided to stay in the region where I grew up.

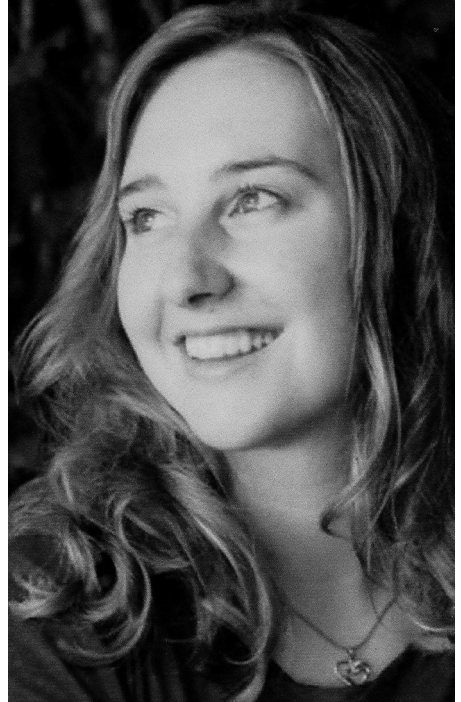
For the last two seasons, I have been teaching at the ski school Meiringen-Hasliberg.

Besides the regular guests, I teach teens at a private school, train the youngsters of a junior racing team and lead some training for ski instructors.

In summer I have already worked in different companies (tourist office, school, mountain hut). However, to spend the summer on the snow in New Zealand is a childhood dream.

I am really grateful for the opportunity to work at the Ruapehu Ski Club, especially in/after this special world situation.

I am very looking forward to meeting you and spending some time together on the slopes or in the Lodge.



Linda Rubi

TONGARIRO IS NO 2

A new survey into the world's most popular walking tracks has revealed the Tongariro Alpine Crossing as the second best trail in the world.

Reviewing the volume of visitors, sentiment and social media posts left by happy trampers, the adventure travel firm The Bucket List has drawn up a list of top tracks.

The 19km trek through New Zealand's oldest national park attracted feedback from 46,988 walkers.

No 1 ranking goes to the Sentiero degli Dei or Pathway of the Gods in Italy which follows the Amalfi Coast for 8km.

Third place goes to the Paine Grande (Chile) followed by Lares trek (Peru), Sankantay trek (Peru), Mt Toubhal (Morocco), Himalaya Trail (Nepal), Larapinta trail (Australia) and Milford Track (NZ).

IWIKAU PARKING

Wondering about parking at Iwikau this season?

This year RAL is not implementing a booking system. First in first served.

An RAL map has all the club overnight parks (the ones with the red allocated numbers).

VOLCANIC ALERT

Geonet on July 6th said new Crater Lake chemistry data, low volcanic tremor levels and a stable warm lake temperature allowed it to lower the Volcanic Alert Level for Mt Ruapehu to Level 1.

The temperature of Crater Lake (Te Wai ā-moe) had decreased from a high of 40 °C in early-May to 21 °C.

After GeoNet lowered the Volcanic Alert Level for Mt Ruapehu from 2 to 1, the 2 km exclusion zone around the summit imposed by DOC was reduced.

DOC then recommended that visitors do not enter the area 1.5 km from the centre of the lake and do not camp in valleys on the mountain.

DOC noted that eruptions can occur with little or no warning at VAL 1.

The change meant that the top of the High Noon six-seater chairlift at Turoa was no longer in the exclusion zone.

RSC CANCELLATIONS

If you are sick or have Covid, please do not visit the Club. Notify us as soon as you can, even within 48 hours. No charges will apply.

If you have had Covid and have completed your seven days of isolation, you are welcome to visit the Club buildings.

For all other cancellations, please adhere to the 48-hour policy and cancel your booking online.

Bookings cancelled or amended by the Administrator have a \$5 per person fee.

ROADSIDE CHECKS

NZ Police and Waka Kotahi have been out in force this winter, checking that vehicles driving in alpine areas are up to safety standards.

They have targeted all vehicles but in particular commercial passenger service vehicles such as buses and vans to ensure they are safe to drive on mountain roads.

Several faults were found but no brake defects were identified. Police found many 44 drivers did not know about the Alpine Code of Practice which was established by the Bus and Coach Association in 2018 to improve passenger safety in alpine areas.

METHVEN MUSEUM

Displays about the history of skiing in New Zealand and the development of Mt Hutt skifield can be seen at the NZ Alpine and Agriculture Encounter in Methven.

There are also displays about snowmaking and skifield management and famous skiing families.

A ski racing suit, goggles, boots and skis worn by Annelise Coberger when she became the first Kiwi to win a medal at the Winter Olympics in 1992 are on display.

Visitors to the centre can also watch the ski antics of the early skiers on one of the many audio visual displays, see ski fashions through the ages and learn about alpine safety.

NO TUROA SALE

Suggestions that RAL may sell the Turoa skifield to fund operations have been put aside.

RAL is to extend the life of the Parklane and Movenpick chairlifts at a cost of \$2.5 million each, rather than replacing them with a gondola.

RAL chairman Geoff Taylor said funding is available to upgrade both chairlifts in time for the 2023 ski season, and no one is offering to buy the skifield.

This followed the AGM where RAL shareholders voted in favour of a motion to restructure of the assets and business of the company. The meeting was assured that RAL would not lose its tax free status.

Geoff told the AGM that the company would be shifting its emphasis from its peak days to week days to give patrons a better experience.

LOOKING AHEAD:

The RAL AGM created provision for a “New Entity” that will be 100 percent owned by RAL. By transferring all business assets and liabilities into a new entity, all the positions of shareholders, creditors and staff will remain the same.

Directors said the old structure served the company well, where through a combination of retained profits and life pass sales the company has been able to provide confidence to its lenders over successive years.

However, that changed in 2020 when Covid-19 hibernation forced the company to secure emergency finance from its lenders (ANZ and MBIE) and this position worsened with the 2021 lockdowns.

The new entity will be the company in a better position at some future point to raise new capital to fund working capital and future infrastructure.

LETTER TO EDITOR

Hi Alan

We enjoyed your latest Bulletin. It was good to see the references to the volcanic unrest at Ruapehu by you and the President.

As you know both the 1969 and 1975 eruption lahars came down through the ski area at night (winter 1969, autumn 1975) which together with the September 2007 eruption lahar has led a few poorly informed people (not RSC members hopefully!) to think eruptions only happen at night.

Like the 23 September 1995 eruption lahars that happened just after the lifts closed that day, such near-misses create some awareness of the hazard and what people should do if they're on the mountain at the time. (A few other people think eruptions only happen in September!)

However, I need to correct two errors of fact in the President's Column which said that “...the crater rim has been altered to help direct future events to travel down the southern side of the Mountain, as happened with the last lahar in 2007”.

The rim was not altered for a number of compelling reasons. Most people and agencies who engaged in the Crater Lake issue were opposed to any alteration. And the option of altering the rim (by creating a trench) would have left most of the eruption tephra still in the lake outlet area and therefore would have increased risks during future eruptions.

As noted above, the last lahar in 2007 was an eruption lahar and the outlet played a very small role as most material was erupted towards the north-northeast sector producing lahars down the NE (upper Whangaehu) and NNW (Whakapapaiti, Far West) sides.

Warm regards

Harry Keys



OPUS FRESH

APPAREL CO.



LOCALLY DESIGNED ADVENTURE WEAR
PROUDLY NEW ZEALAND MADE

OPUSFRESH.COM | OHAKUNE, NZ

AGM TOPICS

President Phill Thomass welcomed members to the 110th Annual General Meeting of RSC which was held in the RNZYS clubrooms at Westhaven Marina.

There was a minute's silence in respect of members who have passed away.

Treasurer Sonia Quinn introduced the annual accounts, saying the last two years had been extremely difficult due to Covid. The Club made a deficit of \$18,000 last year compared with a surplus of \$423,000 the previous year.

The Club had endeavoured to make savings where possible, such as closing the Auckland office and not using the Hut last winter. The accounts were adopted while Hart and Co were reappointed as Auditors.

The meeting adopted a raft of changes to the Club's Constitution. Phill Thomass said it was 10 years since RSC last looked at the Constitution and the world has changed considerably since then. There are two main changes.

Young Adult member. This is a new membership for those aged 18 to 21, as the Committee has been asked by members to extend the Junior membership age to accommodate those entering tertiary education etc.

A Young Adult member on attaining 22 years of age may become a Senior member upon paying the senior subscription.

Reduction in the size of the Committee. This is an acknowledgement that the Committee works in different ways now compared to previous years, and of the fact that it has become increasingly difficult to fill all the positions.

Numbers from 2023 will drop from 21 to an overall size of 14 to 16 consisting of President, three Vice-Presidents (down from five), Treasurer, Secretary and Captain, six to eight Committee members, plus the Immediate Past President.

Subscription increases from next year of approx 6 percent were agreed. Subs

will be Senior \$285. Junior, Young Adult, Associate and Veteran \$103.50. Summer membership 2023-24 summer season will be Junior and Young Adult \$50, Senior \$103.50.

Barbara Scelly was re-elected as Patroness and Peter Brady as Patron.

RSC's first ever lady President Robin Dallas introduced the second ever lady President Catherine Gafa.

Cath joined RSC in 2007 and has been a most enthusiastic Club Captain in recent years. She was voted in with much applause as the 33rd President of RSC.

Vice-Presidents are Carl Burling, Liza Fitsimmons, Damon Forsyth, Marion Quinn and Donald Webster.

Louise Blair is Secretary and Sonia Quinn is Treasurer. Simon Hunt becomes Captain and Paula Cooper is Vice-Captain.

Committee members are Adrian Adriaansen, Drew Blair, Ron Bonfrer, Nichola Crouch, Denise Ditchburn, Sam Hood, Fiona Lovelock, Kevin Schluter.

Two new Life members: Richard Nelson and Phill Thomass, our two most recent Presidents, were elected as Life members.

Richard in 30 years on Committee has done variety of roles, most importantly in setting up computer programs to cover finances, membership, bookings and racing results.

Phill in 18 years has also served in many roles, especially in establishing the Club's computer and in organising countless working parties.

In general business, the meeting was told that the Club's plan to self insure the Hut and Chalet reflects massive increases in the cost of insurance, and the fact that the two buildings have no cash value.

If the Hut was lost there are two vacant club huts which might be looked at, and there is an empty lodge next to the Chalet. Savings on insurance will be placed in a reserve fund to cover any future liabilities in respect of the Hut and/or Chalet.



Upper: Members of the RSC Committee. **Lower:** Catherine Gafa receives the President's ceremonial ice axe from Phill Thomass. Photos: Deane Tetley.



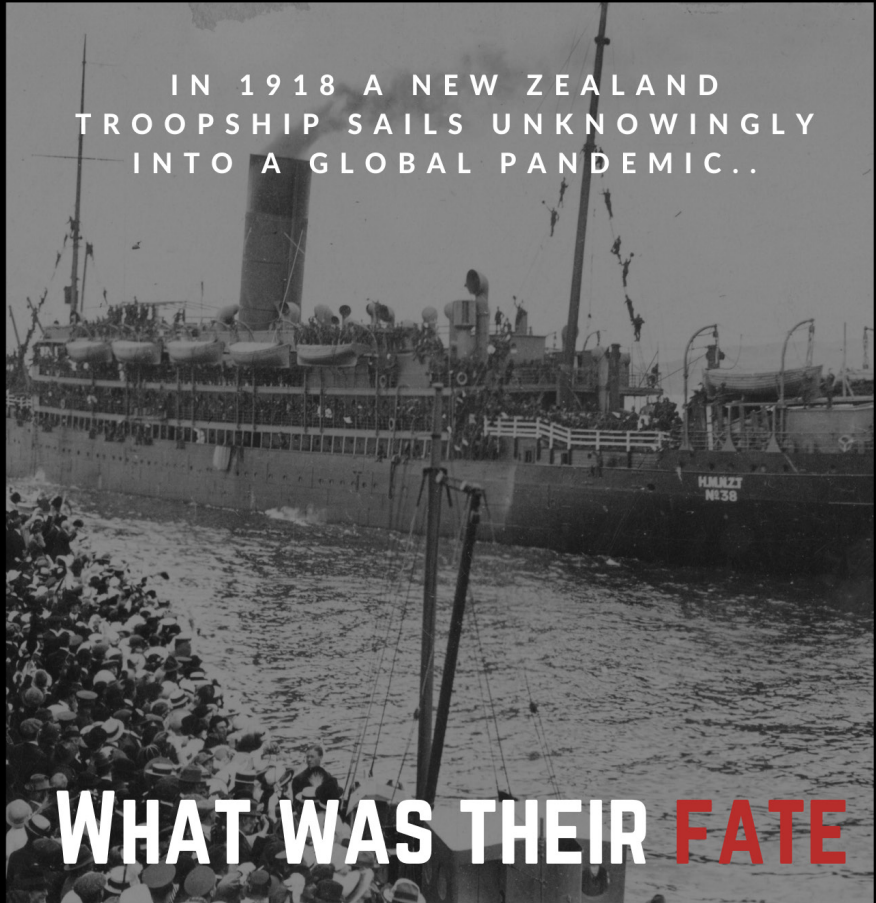
Upper: Richard Nelson is introduced as a Life member by Catherine Gafa. **Lower:** Phill Thomass is nominated as a Life member by Adrian Adriaansen. Photos: Deane Tetley.



Upper: The scene at the AGM. **Lower:** Catherine Gafa entertains. Photos: Deane Tetley.

LATEST EXHIBITION

IN 1918 A NEW ZEALAND
TROOPSHIP SAILS UNKNOWINGLY
INTO A GLOBAL PANDEMIC..



WHAT WAS THEIR FATE

RECEIVE 10% OFF A STANDARD ENTRY
TICKET WHEN YOU SHOW YOUR LIFT PASS

KIDS HQ | THE MESS TENT | GUIDED TOURS |
THE QUARTERMASTER STORE | RESEARCH CENTRE

OPEN 7 DAYS | STATE HIGHWAY ONE, WAIOURU

NATIONAL
ARMY
MUSEUM
TE MATA TOA



LODGE CROSSES BORDER

Without any help, a two-story Italian ski lodge has crossed the border into Switzerland.

Refugio Cervino, built on the Italian side of Theodul Glacier, has slowly been shifting towards its neighbours across the border.

A field of ice defines the boundary between Italy and Switzerland, or it used to. Now the location of the lodge, its ownership and even national boundaries are in dispute.

In the warming mountains the glacier's retreat has changed its flow so now two thirds of the lodge sits in Switzerland.

The Refugio is a tiny Italian enclave containing a restaurant, ski school and hotel.

The 51-year-old steward of the mountain lodge refuses to budge on his position, continuing to serve Italian wine from Italian menus and pay Italian taxes.

RUAPEHU EVENTS CASH

Six events in Ruapehu have been awarded funding, predicted to attract over 40,000 people, with two-thirds being visitors from outside the region.

The Ruapehu event organisers will receive funding from a pool of nearly \$450,000 over the next two to three years, following the announcement of cash from the Thermal Explorer Regional Events Fund.

A mixture of new and existing events will receive the funding, covering diverse interest areas of snow sports, trail running, cycling, music and culture.

The events are Tom Campbell Big Air, Ohakune Roots & Blues Festival, Kotahitanga Festival, Vertical Sky Waka Challenge, Raetihi Gutbuster and one other that is still to be confirmed.

The Thermal Explorer Regional Events Fund was set up by the Ministry of Business, Innovation and Employment (MBIE) to help support sectors impacted by Covid-19.

MAX IN WORLD CHAMPS

RSC member Max Mcquoid, 19, was one of just 20 athletes worldwide who contested the inaugural world freestyle trampoline championship in London.

Freestyle trampolining is a sport that was born in the backyards and gardens of hundreds of kids around the world who used their garden trampolines to create new tricks that combine gymnastics, martial arts tricking and snowboarding techniques.

The sport puts more emphasis on skill development and creativity than the traditional Olympic-style trampoline.

The 20 finalists were chosen after worldwide eliminations. Max had a fine routine in the world champs but did not make the podium.

Max, who has been placed in snowboard events at Whakapapa, is the son of RSC Vice-Captain Paula Cooper.

DES PETERS GETS ONZM

Des Peters, a pioneer of the NZ ski industry, has been awarded the ONZM (Officer of the New Zealand Order of Merit).

During the last 41 years Peters has been responsible for many innovations in the ski industry. His trailblazing path began when he established the first professionally accredited and operated ski school in Mt Taranaki in 1968.

In the 1970s he went on to introduce the first stone grinding machines and snow-making machinery and equipment on NZ slopes.

Peters has also been prominent in the NZ Ski Instructors Alliance.



KOMPERDELL
www.komperdell.com



TCB
SKI BOARD BIKE

VERTIGO
CLIMBING

SCOTT

elan

GIRO

WHAKAPAPA

PICTURE
MOUNTAIN PHOTOGRAPHY

lébent

SKIMMIES

TauPO DeBretts
STAY · SOAK · SOOTHE · SAVOUR

HAENSLI CUP CANCELLED

Unfortunately, due to weather and snow conditions, the Haensli Cup has been cancelled for this year.

RSC thanks all the sponsors listed above who were to provide prizes for the race. We hope to see you all again next season.

RSC CALENDAR OF EVENTS

Aug 2022	29-Sept 1	NIPS week one Years 1-6	CANCELLED
Sept 2022	3	Rangatira Trophy	
	12-15	NIPS week two Years 7-8	
	17	Ngauruhoe Trophy	
	19-20	NI secondary school champs	
Oct 2022	1	RSC Club Champs	
	1-6	School holidays	
Dec 2022		DOC summer programme	
Jan 2023		RSC summer events	
Feb 2023		Working parties	
Mar 2023		Working parties	
May 2023	1	Ski season bookings open	
June 2023		AGM at Auckland	

NEW MEMBERS

RSC welcomes the following new members:

Senior

Graeme Parr (Pukekohe)
Jessica Parr (Pukekohe)
Milena Cooper (Auckland)
Simon Reilly (Auckland)
Torben Johannesen (Auckland)
Mette Lysholt Johannesen (Auckland)
Janey Liu (Auckland)
Cynthia Forbes (Auckland)
Tania Donnianni (Auckland)
Pablo Donnianni (Auckland)
Neeraj Duggal (Hamilton)

Teen

Max Forbes (Auckland)
Lucia Donnianni (Auckland)

Junior

Thomson Cooper (Auckland)
Ellery Cooper (Auckland)
Beatrix McCusker (Auckland)
Toby McCusker (Auckland)
Luke Miller (Auckland)
Ellieyana Hopkins (Pukemoremore)
Trinity Lawson (Auckland)
Aria Creighton (Auckland)
Clara Johannesen (Auckland)
Kiara Liu (Auckland)
Mattias Donnianni (Auckland)
Sofia Donnianni (Auckland)

Member child

Lincoln Liu (Auckland)
Franklin Liu (Auckland)

FIONA IS ELECTED

Former NZ ski champion Fiona Stevens has been elected to the council of the FIS (International Ski and Snowboard Federation) which oversees skiing and snowboarding events around the world.

The FIS Council has a two-year term 2022-24 and consists of 21 members including the FIS President, 18 elected members and two athletes who are Hannah Kearney (US, freestyle skiing) and Martti Jylha (Finland, cross-country skiing).

Fiona grew up in a skiing family in rural Canterbury, close to ski fields.

Her aunt Annette Johnson was a member of NZ's first Olympic Winter Games team in 1952.

Fiona skied in the 1980 Olympic Winter Games, finishing 30th in a field of 51 in the GS. On retirement she co-founded Snowvision.

The Snowvision Foundation dates from 2004 when Fiona Stevens was approached and asked if she could find a way to help snow sports get better resourcing.

Fiona agreed to look at it because of her history with skiing, her love of the mountains and passionate belief in snow sports.

She called on Richard Mehrtens (co-founder) and together they set about creating a structure that was robust, credible and long term to provide a modern day solution and platform to attract financial support for snow sports.

Blackonwhite is a brand that was specifically created for New Zealand's winter endeavours. It means "New Zealanders on snow" in ski racing, snowboarding, freeskiing, extreme skiing, cross-country and more.

Over the last decade, the Blackonwhite brand has been used for events and numerous fundraising activities, branding international teams and individuals. The brand has been used exclusively for the benefit of The Snowvision Foundation.



Fiona Stevens




Fiona Stevens skiing in the 1980 Olympic Winter Games.




TCB

SKI BOARD BIKE

NZ's top Ski, Board & Bike
retail, rental and workshop
Located in the heart of Ohakune!
*Amazing customer service
*Professional boot fitters
Come see the boot doctors!



For the ultimate in ski & board
servicing come see the TCB team.
Go further, faster and have more control.
Experience a TCB tune today!



At TCB we sell, rent and repair
everything from kids bikes to E-Bikes.
Shuttles going to the Ohakune Old Coach Road
leave from the shop 7 days a week.

PH 06 3858 433

Shop online at- www.tcb.nz

SNOW SPORTS NZ

Snow Sports NZ of Wanaka is the national sporting organisation representing adaptive snowsports, alpine ski racing, cross-country skiing, freeskiing and snowboarding.

In September 1931 the Federated Mountain Clubs (FMC) of New Zealand set up a sub-committee to consider the control of skiing on a national basis.

This committee drafted the constitution and rules of the Ski Council, which were formally adopted in 1932. The Ski Council for the next 21 years continued to be the sport's governing body.

As a result of new developments after the Second World War, such as the introduction of ski lifts, the appointment of overseas instructors, the construction of new mountain huts and improved access roads, it appeared desirable to have an independent national body.

Accordingly, a plan envisaged a new independent national organisation, to be known as the NZ Ski Association, having an executive council composed of members elected from each island and one member nominated by the FMC.

NZSA was established in 1954 and operated for 42 years until 1996 when it changed its name to Snow Sports NZ.

In that time it ran ski events, ski tests, sent teams to the Olympic Winter Games and represented skiing (and later snowboarding) generally.

Over the years, as snow sports developed, other member organisations were formed including the NZ Snowboard Association in 1992, Ski Racing NZ in 1994 and Disabled Snow Sports NZ in 1976.

The idea of having all the snow sports represented by one umbrella organisation existed since 2007 and finally became a reality in 2010. The separate sports merged under Snow Sports NZ.

From 2012 Snow Sports NZ undertook

major changes. Most significantly the High Performance Sport Winter Performance Programme became part of Snow Sports NZ.

Bringing the high performance arm of the sports into the same organisation allowed Snow Sports NZ to offer and manage a clear pathway from first time participation to sport and athlete development to high performance.

The new high performance centre in Wanaka opened in April 2013 to provide winter sport athletes with a base to train off the mountain.

The centre has a strength and conditioning gym and medical and rehab consulting rooms so specialist staff can provide timely and effective illness and injury diagnosis and management for athletes.

There is also a dry land training facility which includes a trampoline, mini ramp, dry slope and rails.

RSC members of the FMC Ski Council 1932-1954:

Joyce Beale, Charlie Caplen, Morrie Collier, Dick Duncan, Ted Ferrier (chair), Austie Hayward, Tom Keogh, George Lockwood, Walter Long, Ian Major, Bob Murie, Brian Murphy, Roy McKenzie, Douglas Naish, Don Plummer, Stan Rennie, Harold Snowden, Rod Syme (chair) Fred Vosseler (chair).

RSC members of NZ Ski Assn Council 1954-1996:

Stan Blakely, Alan Carter, Morrie Collier, Leo Collins (chair), Arnold Cooper (chair), Dick Duncan (chair), Alan Graham, Austie Hayward, Bill Hunt (chair), Murray Laird, Tom Latham, Walter Long (chair), Athol Lonsdale (chair), Gill Macklin, Ian Major, Dick Morpeth Roy McKenzie, Douglas Naish, Bill Pasley, Val Saxton, Bob Stokes, Rod Syme, Julien Temm, James Wallace, Bill Ward (chair).

RSC member of Snow Sports NZ board 1996-2022):

David Scott.



Upper: Lovely corduroy at Whakapapa. **Right:** The Nga Wai Heke chairlift at Turoa.
Photos: RAL.



Skiing at Mt Ruapehu. Photos: RAL.



Snowboarding at Ruapehu. Photos: RAL.



The RSC Masters team which came second in the Christie Derby: Carl Burling, Zednek Kudrna, Slavka Kudrnova, Chris Woudenberg. Photo: Linda Rubi.

CHRISTIE DERBY

The 2022 Christiania Derby was run at Whakapapa on a bluebird day on Saturday August 13th and was an outstanding success.

Due to lack of snow, it was unsure if the event would go ahead but the RAL race team and groomers were awesome and did their best to create a shortened but safe GS course.

WINNING TEAMS

Mens

Rangatira Rusties 57.06
UASC Uphill Men 57.09
Rangatira Rebels 64.61

Womens

Graduates Slush Puppies 67.43
UASC Ladies Ski 76.07
Christie Ladies Clan 79.95

Masters

Christie Bootleggers 66.79
RSC Master Blasters 68.16
Taupo Masters 73.60

Juniors

Christie Junior Guns 1 64.45
Christie Junior Guns 2 78.96
Christie Junior Guns 3 90.00

Snowboard

UASC Boarder Bears 75.19
UASC Boarder Badgers 80.1
Christie Boardroom 83.83

WINNING INDIVIDUALS

Junior boys

Tongariro - Alex Parr 19.49
Christiania - George Hannaford 19.58
Christiania - Bruno Hannaford 20.64

Junior girls

Individual - Amelie Wood 21.39
Taupo - Layla Sutcliffe 23.76
Christiania - Zoe Jones 24.23

Masters mens

Rangatira - Rob Yallop 20.25
Christiania - Kirk Hannaford 20.63
Tongariro - Charles George 20.66

Masters ladies

Christiania - Rachel Ward 24.87
Taupo - Tish Mau 25.21
Tongariro - Anne Couper 25.86

Men

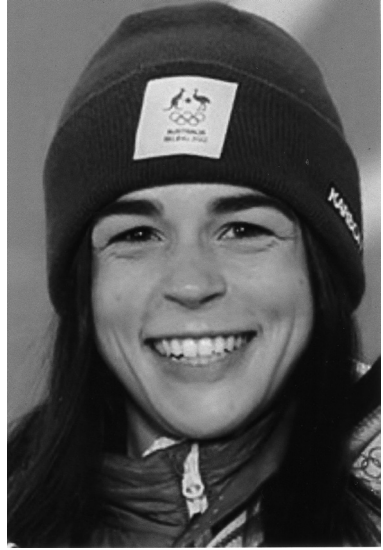
Taupo - Nick Moss 16.95
UASC - Toby Main 17.29
Graduates - Andrew Drummond 18.49

Women

Rangatira - Monique Moss 17.32
Graduates - Jonti Cullen 19.86
Graduates - Kate Murphy 20.94



Upper: The start of the Christie Derby 2022 in Te Heuheu Valley. **Lower:** The fastest time in the Ladies race went to Monique Moss. Photos: Christie SC.



SKIING STARS. *Left:* Ragnhild Mowinckel (Norway) won the final race of the alpine skiing World Cup in season 2021-22. She has two Olympic Games silver medals. *Right:* Jakara Anthony (Australia) won a freeski gold medal at the 2022 Winter Olympics.



ROYAL SKIERS. *Left:* Queen Maxima of the Netherlands. *Right:* King Haakon of Norway and Queen Maud, circa 1906.

SKI OR SNOWBOARD?

Time Out (Australia) answers the question.

It's the big question everyone asks the first time they head to the mountain.

How can you know which one you're going to like more before you've even tried it?

Well, there are a few factors that go into deciding whether you're going to be a skier or snowboarder.

Skiing is generally easier for a newbie – let's get that out of the way first.

A lot of people think snowboarding is going to be easier, but in my experience I've been able to teach someone to ski a green run in a matter of hours, while friends trying snowboarding for the first time are still spending a lot of time on their butts by the end of the first day.

Snowboarding takes more time to master the balance and turns.

However, once you're up and running, snowboarders tend to be able to scale up much more quickly – while even quite competent skiers can still find those black runs quite challenging on skis, as it requires a much higher level of technique and refinement to master.

In the end, it comes down to how often you're going to go skiing, and how quickly you'd like to be ready to go it alone.

If you're not going to go often, and want to be zooming down green runs alone by the first afternoon, I'd recommend skiing.

If you're willing to put in the work, are a bit of a daredevil, and don't mind the learning curve of snowboarding, go for it. You'll be hitting up the harder runs more quickly once you've worked it out.

YODELING FESTIVAL

Our Swiss instructor Linda Rubi has in the past organised a Yodeling Festival in her home town of Brienz.

Perhaps no sound is quite as evocative of a place as is Swiss yodeling. While it is performed for pleasure and entertainment now and has become a folk tradition, the evolution of yodeling was one of rural practicality.

Yodeling evolved in rural Alpine communities as a vital form of communication. It was used to call to cow flocks.

More importantly, it was used to communicate from village to village and mountain to mountain, for communities separated by deep Alpine valleys and rugged terrain.

It has evolved over the centuries to become an art form. A prime singer improvises and others join in to harmonize.

In the 19th century yodeling morphed into songs that included two, three, and four-part harmony. This is what we know and enjoy today, at festivals and other performances. Songs are normally accompanied by an accordion called a *schwyzerörgeli*.

Today the Swiss Yodeling Association keeps the practice alive. Lyrics are mostly in German, some in French. Vocal styles vary a little from region to region.

WORLD SKI CHAMPS

Crans Montana (Switzerland) has been named as the host of the 2027 FIS alpine World Ski Championships.

It will be the second time that the resort has hosted the championships and 2027 will mark the 40-year anniversary from their first outing.

RSC CHALET WANAKA?

Ten times RSC champion David Scott has posted this on Facebook: “Does any member want to talk about a way forward, perhaps with other clubs (Rangatira has shown interest) in investing in a Club building in the Wānaka area?”

“Diversification and redundancy. It has been discussed many times by the Club but never made it across the line.”

Ex-President Phill Thomass agreed: “I’ve long advocated for such an idea, either RSC doing it on its own or in a partnership. We have a lot of members who also ski the South Island as well as Ruapehu.”

Vice-President Liza Fitzsimmons was among those who posted in favour.

Some folk wanted RSC to form a new club to own the building. Others saw little need to double administration.

Matt Caldwell: I agree. “With snow levels rising over the years, it makes sense to investigate a South Island option for the longevity of the Club.”

Chris Woudenberg: “Why does it need to be a new club? Why duplicate all the infrastructure and admin we already have? Is there a lot more work having five buildings instead of four?”

Personally I can recall past efforts to diversify, usually in the Mt Hutt area rather than Wanaka.

They all ended up in the too-hard basket.

Some members wanted to go to Canada, not the South Island.

Some said RSC has enough trouble filling its Committee positions without loading more work.

Others wondered who would want to do a working party in the South Island.

Watch this space.

Alan Graham

CHRISTIE MEMORIES OUTHOUSE CORNER

The Christiania Derby interclub ski race is run each year by the Christiania Ski Club of Hamilton. It has been held 64 times, less the occasional year when there has been no snow.

In 1963 RSC entered four men’s teams. The A team included Owen Clearkin, John Willis, Robert Palmer and Murray Laird, all members of the NZ alpine ski team, and hot shots at ski racing by any standard.

RSC entered its B and C teams made up of up and coming young ski racers who took the whole thing seriously.

We also entered the “The Bears”, so named by Owen Clearkin who was in the A team.

The Bears were Bruce Day, Peter Georgetti, Jim Frankham and Alan Graham, all quite capable skiers but not exactly ski racers.

The Derby was run down the Rockgarden in fine weather and attracted 127 starters.

RSC A romped home easily to win the men’s race. The Bears beat both the B and C teams, to the substantial consternation of the Club.

The issue was Outhouse Corner. While the race course basically went straight down the Rockgarden, it diverged to take in a very sharp and icy corner around an outdoor dunny next to the Christie Lodge.

Many of the racers were not used to such goings on and lost time on the corner. Our intrepid quartet had no problem with dunnies and we finished in style.

It was our greatest race and we even got a special recognition in The Bulletin.

Alan Graham.



Upper: : Is this RSC's best ever igloo? Photo: Natalie Ivatt. **Lower:** The Wairere Stream near The Chateau. Photo: RSC Collection.

ACROSS THE SKIING WORLD

FIS has a new name. After 99 years of existence, the world's governing body for snow sports has changed its official name to include Snowboard.

The new name of the organisation is the International Ski and Snowboard Federation. The acronym of the organisation will remain FIS.

British ski tour operator Inghams has named its 10 best ski resorts in the world. They are:

Tignes (France), Whistler (Canada), Obergurgl (Austria), Saas-Fee (Switzerland), Val d'Isère (France), Selva Val Gardena (Italy), Levi (Finland), Mayrhofen (Austria), Méribel (France), Soldeu (Andorra).

A Utah judge has dismissed some claims filed by a retired optometrist against actress **Gwyneth Paltrow** after the two collided at a ski resort, ruling that it was not a hit-and-run ski crash, as the lawsuit claimed.

Terry Sanderson filed the lawsuit against Paltrow, her ski instructor Eric Christiansen and the Deer Valley Resort, saying a collision in 2016 left him with a brain injury and four broken ribs.

Paltrow has denied all charges but there is still a claim against her for "simple negligence" for her actions prior to the collision.

The other claims against Christiansen and the resort, which were only regarding actions taken after the crash, have been dismissed.

The judge was told that Paltrow's actions after the collision were reasonable and that she remained at the scene. An instructor verified that she stopped to give aid until everyone felt that Sanderson was not seriously injured. A trial is scheduled for the case in March 2023.

Three skiing events will be added to the 2026 Olympic Winter Games programme in Milan-Cortina.

They are men's freestyle skiing dual moguls, women's freestyle skiing dual moguls and women's ski jumping large hill. These bring the total number of FIS medal events to 58.

Non-FIS events added to the 2026 programme are skeleton mixed team event, luge doubles for men and women, and the inclusion of ski mountaineering as a new discipline.

US skiers and snowboarders took to the slopes in record numbers this year. The National Ski Areas Association (NSAA) reported 61 million visits in 2021-22, a 3.5 percent increase over the previous season and the highest since it began tracking visits in 1978.

This winter wasn't a particularly snowy one. The average snowfall in the US was only 145 inches, lower than the 10-year average of 166 inches. Instead, it seems people just wanted to get outside.

However, it wasn't all good news for skiers. Resorts struggled to hire and retain employees, and they faced complaints about closed lifts, limited terrain and long queues.

A Colorado elementary school student has become the youngest person to ski on all seven continents.

Having skied Antarctica in February 2022, following Africa, Asia, Australia, Europe and North America, Keira Nicole Lipp skied in Chile aged 10 years and 23 days.

Keira skied in Cervinia, (Italy), Thredbo and Perisher (Australia), YongPyong and Jisan, (South Korea), Oukaïmeden, (Morocco) and several resorts in Colorado (US).

Jonathan Celauro has skied his **3000th** recorded day at Killington (Vermont, US).

According to his meticulous records he has skied more than 100 days at Killington Resort for 24 of the past 26 seasons.

He started out as a ski instructor but switched to waiting tables and setting up a painting business.

JC has very distinct rules as to what qualifies for an official earned day. He has to take at least five runs or 5000 vertical feet to make the day count.

Swedish skier Jesper Tjäder set a new world record by skiing 155 metres along an iron rail. The record attempt lasted 127 runs over three days.

The takeoff kick needed to be perfectly shaped and angled so that Tjäder could get the maximum amount of speed without jumping too far down the rail.

A mixed nationality three-person team based out of Chamonix has completed the first ski descent from the summit of Falak Sar (5963 metres), the highest peak in the Swat Valley in Pakistan.

The team was **Aaron Rolph** (UK), **Bine Žalohar** (Slovenia) and **Tom Grant** who has dual American-British citizenship.

Despite being dubbed the Switzerland of Pakistan and being home to the country's most developed ski area, Malam Jabba, the remote Swat valley receives almost very few international tourists.

Germany has a 200 metre sand skiing hill named Monte Kaolino which is made from 35 million tons of quartz sand that was a byproduct of a nearby mine.

It utilizes what they call a boat lift system, a sort of cable car that ferries up to nine people at a time on a ride that takes 80 seconds.

The site has been home to the world sandboarding champs.

House prices are climbing in Methven as buyers target properties in the Canterbury ski town.

The average property value has jumped

more than \$100,000 in the last 12 months to \$693,000.

Some buyers mainly from Christchurch are on the hunt for holiday homes which they can rent out on Airbnb. There are also buyers from other parts of New Zealand who are seeking to relocate permanently.

Methven has long been home to the Mt Hutt skifield and the opening of hot pools has helped all-seasons occupation.

*A popular Vermont (US) ski resort originally known as **Suicide Six** has changed its name to **Saskadena Six**, saying the old name was insensitive.*

The new name was chosen to honour the indigenous Western Abenaki people. Saskadena is a word from the Abenaki language that means "standing mountain".

Guided skiing is now available on the highest US mountain, Denali in Alaska.

Until this year guides were banned from taking ski mountaineering clients onto Denali. New safety rules have allowed that to change.

The runs have everything from breakable crust to wind slab to corn to powder, all the way up to super hard alpine ice.

Required are all the skills of a mountaineer for glacier travel, crevasse rescue, climbing 50-plus degree slopes covered in snow and ice with crampons and ice axes, self-arresting to prevent long falls and dealing with the altitude.

*Apartments at the **Cardrona Alpine Resort** in Otago were evacuated early one morning in August after a blaze broke out in the skifield's retail store.*

Four crews from the Wanaka and Luggate volunteer fire brigades fought the fire which was brought under control. Nobody was hurt in the fire.



CLUB ITEMS & SERVICES FOR SALE

RSC Administration Office, P.O. Box 8064, Symonds Street, Auckland 1150

Website: www.rsc.org.nz

email: admin@rsc.org.nz

Lockers

Ski and gear lockers are available in the Hut, Lodge and Turoa buildings.

Please email admin@rsc.org.nz for current availability.

Annual Locker Rental Rates:

Charged at the date of allocation.

Ski Locker \$57.50

Gear Locker \$28.75

Club Items

(Add \$3 for each order to be posted)

Name Badge (free to new members) \$12

PHONE NUMBERS

RSC Office	09-377-3856
Lodge	07-892-3824
Hut	07-892-3822
Chalet	07-892-3823
Turoa	06-385-8767

NEW MEMBERS COSTS

Attend two working parties.	
Senior joining fee	\$199
Junior joining fee	\$99
Annual senior subscription	\$269
Annual junior subscription	\$98

ACCOMMODATION FEES

Winter 2022 (Effective May 1st 2022)

Senior member	18 years and over	\$58
Teen member	14 - 17 years	\$50
Junior member	13 years and under	\$38
Member's child	7 years and under	\$30
Senior non-member	14 years and over	\$106
Junior non-member	13 years and under	\$71
Life members		\$0
School group children		\$68
School group adults		\$90

Summer 2022-23 (Effective November 1st 2022)

Senior members	\$30
Junior members	\$20
Senior non-members	\$35
Junior non-members	\$25

Note: Ages apply from January 1st 2022